



CPI Training Solutions for Educators

De-escalation training solutions that make a positive impact on all staff and their students by creating a safer learning environment for all.



Cultivate a learning environment where students can thrive and educators feel supported.

Equipping schools and districts with the skills and confidence to recognize and respond to disruptive behaviors is the key to creating an environment where students can thrive.

CPI's programs for educators lead the market in strengthening student outcomes, mitigating challenging behavior, and increasing staff retention. We have the right solutions—for all levels of risk—to help you create a healthy learning environment. We'll be there the whole time to help you implement it, ensuring everything fits for your school and district.

Company Overview

Crisis Prevention Institute, Inc. (CPI) is the worldwide leader in evidence-based de-escalation and crisis prevention training. Since 1980, we have helped train more than 17 million people within service-oriented industries.

We are dedicated to changing behaviors and reducing conflict for the *Care, Welfare, Safety, and SecuritySM* of everyone. We believe in the power of empathy, compassion, and meaningful connections. We believe personal safety and security are the antidotes to fear and anxiety. It's a philosophy that is central to everything we do, and traces back to our beginning. It is what defines and differentiates us and informs our core beliefs.

CPI Delivers Results

An Investment in Staff Development and Retention

CPI training programs provide strategies and techniques for all levels of education professionals, from district administrators through classroom staff. Our evidence-based de-escalation and crisis prevention approaches keep the *Care, Welfare, Safety, and SecuritySM* of all students and staff top of mind.

98% 

of educators rated CPI's training materials and support as better compared to other de-escalation training programs they have attended.

96% 

of educators have seen significant improvement in staff de-escalation skills and overall school safety since implementing CPI training.

74% 

of educational institutions reduced challenging/disruptive behaviors by 20-29% or more since implementing CPI de-escalation techniques.

87% 

of educational institutions rated CPI's risk assessment framework as better compared to other de-escalation training programs they have attended.



Our Training Approach

CPI's train-the-trainer approach ensures successful delivery of crisis prevention and de-escalation training.

Grounded in principles of adult learning theory, our training establishes onsite advisors and coaches, called Certified Instructors, through our Instructor Certification Program. Training is not a one-time event; with Certified Instructors, you make sure it's always ongoing.

3 Steps to a Confident, Resilient Staff

1 We Certify Your Trainers

CPI Instructors train select staff to become your organization's Certified Instructors.

2 Your Trainers Train Their Colleagues

Certified Instructors conduct ongoing trainings using CPI courses and materials.

3 Your Staff Gain Skills and Confidence

Trained staff gain practical expertise and vocabulary to safely address challenging situations.

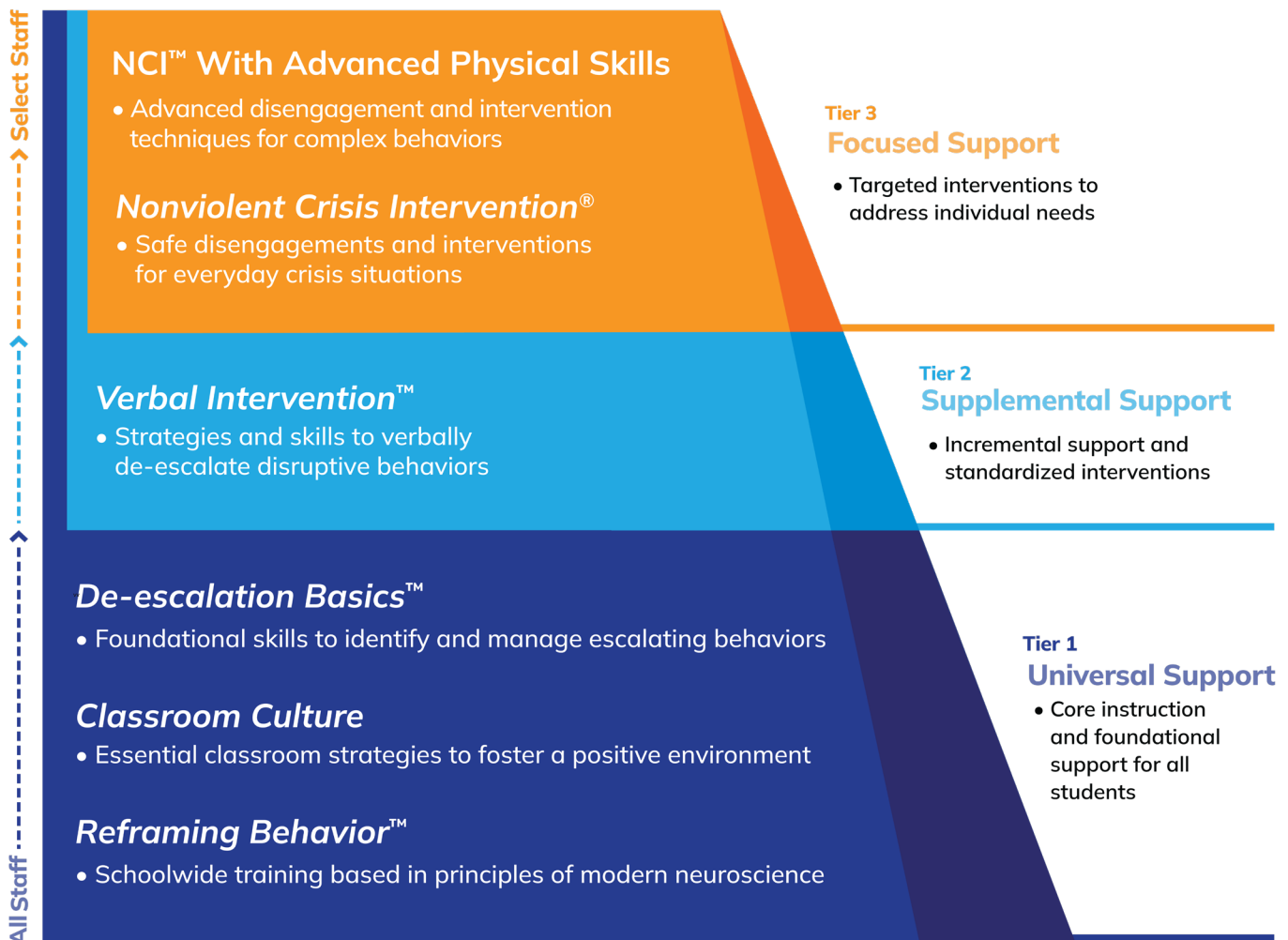
OUR MISSION

We teach the world that by combining the right skills with dignity and respect, you create well-being throughout schools and districts.

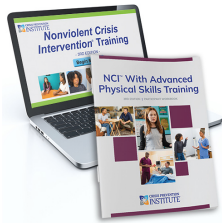
A positive school climate starts with a resilient, knowledgeable staff.

Every school community is different, with its own unique risks, responsibilities, and needs. That's why we customize a training solution for your requirements with our crisis prevention experts. Our training prepares and empowers everyone involved in fostering positive student outcomes, from teachers and building administrators, to parent-teacher organizations and guidance counselors. When schools and districts are confident in managing disruptive behavior, they can focus on delivering the highest quality learning environment possible.

CPI Training Programs for Educators

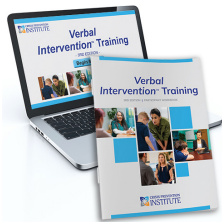


CPI Training Programs



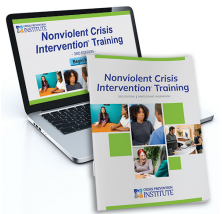
NCI™ With Advanced Physical Skills

This program is designed to equip educators and administrators with problem-solving and decision-making skills to handle complex behaviors. In addition to *Nonviolent Crisis Intervention*® techniques, staff learn advanced disengagement and intervention skills for higher-risk situations.



Nonviolent Crisis Intervention® Training

This training provides educators with the skills to safely handle everyday crisis situations, including safe disengagements and interventions.



Verbal Intervention™ Training

This training equips education staff with the skills and confidence to verbally de-escalate disruptive behaviors and prevent escalation. *Verbal Intervention*™ is ideal for staff who do not experience high-risk situations.



De-escalation Basics™

De-escalation Basics is a schoolwide, online, on-demand training for all education staff. In 3 lessons, this foundational program will equip staff with the skills to reduce disruptive behavior, keeping students on track for academic success.



Classroom Culture

Classroom Culture empowers school leaders and educators to foster a positive learning environment with practical techniques to prevent or mitigate the need for de-escalation interventions.

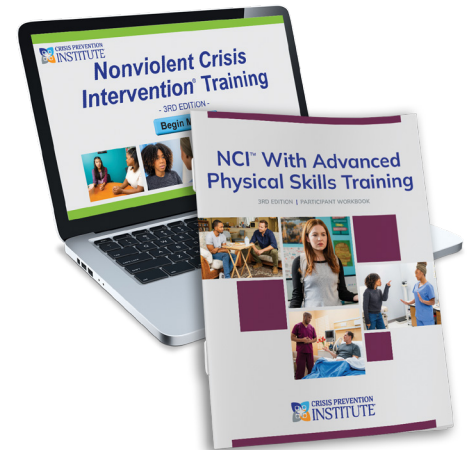


Reframing Behavior™

Reframing Behavior is a schoolwide, subscription-based program for K-12 staff, grounded in modern neuroscience. This training helps build a positive, supportive learning environment and prevent disruptive behavior.

NCI™ With Advanced Physical Skills

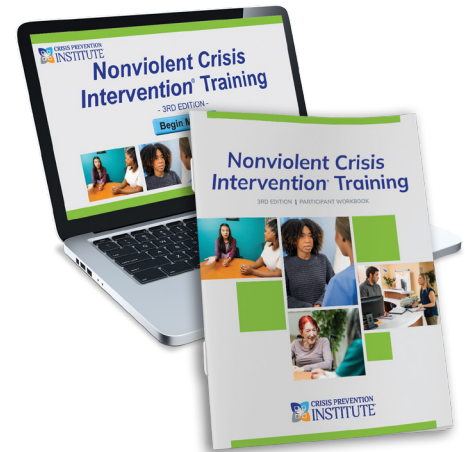
NCI™ With Advanced Physical Skills is designed for organizations that support persons who are more likely to demonstrate dangerous or more complex behaviors. It equips staff with the problem-solving and decision-making skills to help them recognize the level of risk and apply the most appropriate verbal and/or physical intervention techniques. In addition to all *Nonviolent Crisis Intervention*® skills, staff learn safe and advanced disengagement and intervention skills for situations involving higher-risk behaviors.



Program Details	
TRAINING COMPONENT	LEARNING INTENT AND OBJECTIVES
Introduction	State the learning expectations and guidelines for the training. Connect the philosophy of the training to the participants' values and relate the training to their experiences in the workplace.
Module 1: Understanding Behavior and Its Risk	Interpret the brain's response to threat as one of the causes of distress behavior. Identify the level of risk of the behavior and identify preventive strategies to mitigate risk.
Module 2: The CPI Crisis Development ModelSM	Identify behavior using the <i>CPI Crisis Development ModelSM</i> . Apply staff approaches effective in responding at each behavior level to prevent further escalation.
Module 3: Integrated Experience	Explore underlying causes of behavior; recognize the need to maintain consistent, calm behavior in a crisis; and understand how the behavior of one person impacts the behavior of others.
Module 4: Supportive Communication Skills	Practice communication strategies to positively impact an individual's behavior and prevent or de-escalate a crisis. Identify how to prepare for a difficult conversation.
Module 5: Responding to Defensive Behaviors	Identify stages of defensive behavior using the <i>Verbal Escalation ContinuumSM</i> . Use the appropriate intervention strategies that are most effective at each stage.
Module 6: Safety Interventions	In the moment of Risk Behavior, choose Safety Interventions that are a last resort, reasonable, and proportionate. Identify and apply non-restrictive verbal and environmental interventions to keep self, others, and the person safe when crisis escalates to risk behavior.
Module 7: Post-Crisis	Apply a framework that helps guide staff through the process of establishing Therapeutic Rapport and learning after a crisis. Explore the formal documentation process when a non-restrictive disengagement or a restrictive intervention was used.
Safety Interventions: Disengagement Skills	Describe and demonstrate use of CPI disengagement principles for risk behavior. Use the Physical Skills Review Framework to convey reasoning for the intervention used as a response to risk presented.
Safety Interventions: Holding Skills	Describe and demonstrate use of CPI holding principles for risk behavior. Use the Physical Skills Review Framework to convey reasoning for the intervention used as a response to risk presented. Describe how to consider the Risks of Restraints and the <i>Opt-Out SequenceSM</i> when using the CPI holding principles.
Conclusion and Assessment	Reflect on new learning and complete an action plan.

Nonviolent Crisis Intervention® Training

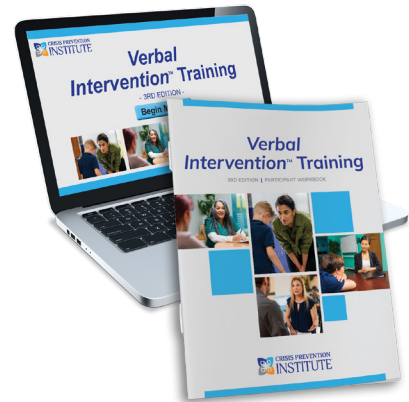
Nonviolent Crisis Intervention® Training focuses on verbal de-escalation and early intervention, giving staff an effective framework for decision-making and problem solving. By teaching safe disengagements and restrictive interventions that can be implemented with the least use of force, this program provides the safest environment for all parties involved.



Program Details	
TRAINING COMPONENT	LEARNING INTENT AND OBJECTIVES
Introduction	State the learning expectations and guidelines for the training. Connect the philosophy of the training to the participants' values and relate the training to their experiences in the workplace.
Module 1: Understanding Behavior and Its Risk	Interpret the brain's response to threat as one of the causes of distress behavior. Identify the level of risk of the behavior and identify preventive strategies to mitigate risk.
Module 2: The CPI Crisis Development ModelSM	Identify behavior using the <i>CPI Crisis Development ModelSM</i> . Apply staff approaches effective in responding at each behavior level to prevent further escalation.
Module 3: Integrated Experience	Explore underlying causes of behavior; recognize the need to maintain consistent, calm behavior in a crisis; and understand how the behavior of one person impacts the behavior of others.
Module 4: Supportive Communication Skills	Practice communication strategies to positively impact an individual's behavior and prevent or de-escalate a crisis. Identify how to prepare for a difficult conversation.
Module 5: Responding to Defensive Behaviors	Identify stages of defensive behavior using the <i>Verbal Escalation ContinuumSM</i> . Use the appropriate intervention strategies that are most effective at each stage.
Module 6: Safety Interventions	In the moment of Risk Behavior, choose Safety Interventions that are a last resort, reasonable, and proportionate. Identify and apply non-restrictive verbal and environmental interventions to keep self, others, and the person safe when crisis escalates to risk behavior.
Module 7: Post-Crisis	Apply a framework that helps guide staff through the process of establishing Therapeutic Rapport and learning after a crisis. Explore the formal documentation process when a non-restrictive disengagement or a restrictive intervention was used.
Safety Interventions: Disengagement Skills	Describe and demonstrate use of CPI disengagement principles for risk behavior. Use the Physical Skills Review Framework to convey reasoning for the intervention used as a response to risk presented.
Safety Interventions: Holding Skills	Describe and demonstrate use of CPI holding principles for risk behavior. Use the Physical Skills Review Framework to convey reasoning for the intervention used as a response to risk presented. Describe how to consider the Risks of Restraints and the <i>Opt-Out SequenceSM</i> when using the CPI holding principles.
Conclusion and Assessment	Reflect on new learning and complete an action plan.

Verbal Intervention™ Training

Verbal Intervention™ Training is ideal for organizations with a hands-off policy and staff who don't experience the kind of higher-risk situations that require restrictive interventions. This training instills the confidence and skills to verbally de-escalate disruptive behaviors and prevent further escalation.



Program Details	
TRAINING COMPONENT	LEARNING INTENT AND OBJECTIVES
Introduction	State the learning expectations and guidelines for the training. Connect the philosophy of the training to the participants' values and relate the training to their experiences in the workplace.
Module 1: Understanding Behavior and Its Risk	Interpret the brain's response to threat as one of the causes of distress behavior. Identify the level of risk of the behavior and identify preventive strategies to mitigate risk.
Module 2: The CPI Crisis Development ModelSM	Identify behavior using the <i>CPI Crisis Development ModelSM</i> . Apply staff approaches effective in responding at each behavior level to prevent further escalation.
Module 3: Integrated Experience	Explore underlying causes of behavior; recognize the need to maintain consistent, calm behavior in a crisis; and understand how the behavior of one person impacts the behavior of others.
Module 4: Supportive Communication Skills	Practice communication strategies to positively impact an individual's behavior and prevent or de-escalate a crisis. Identify how to prepare for a difficult conversation.
Module 5: Responding to Defensive Behaviors	Identify stages of defensive behavior using the <i>Verbal Escalation ContinuumSM</i> . Use the appropriate intervention strategies that are most effective at each stage.
Module 6: Safety Interventions	In the moment of Risk Behavior, choose Safety Interventions that are a last resort, reasonable, and proportionate. Identify and apply non-restrictive verbal and environmental interventions to keep self, others, and the person safe when crisis escalates to risk behavior.
Module 7: Post-Crisis	Apply a framework that helps guide staff through the process of establishing Therapeutic Rapport and learning after a crisis.
Conclusion and Assessment	Reflect on new learning and complete an action plan.

CPI Training Success Story

“For some of our programs, every single person that comes in the room; teachers, TAs, support staff, front-office workers, nurses. We've even done bus driver training; everyone that is involved with students. It really has become that common ground—that common language.

KELLI HUNT,
IMPLEMENTATION COACH, TRUENORTH EDUCATIONAL COOPERATIVE 804, ILLINOIS

De-escalation Basics™

De-escalation Basics is an online course designed to equip all K-12 education staff with practical, foundational skills to identify and handle challenging student behaviors, resulting in a safer and more supportive learning environment for everyone.



Program Details

The training includes:

- On-demand, online course that accommodates busy schedules
- 3 focused lessons that quickly provide staff with foundational de-escalation skills
- A downloadable reference guide with key concepts and terms

Staff will gain:

- Essential awareness skills to identify escalating behaviors
- A common language across departments to effectively discuss crises
- The skills to recognize when to call for help

CPI Training Success Story



We have provided a different way of thinking—instilling confidence and pride in place of feelings of dread and defensiveness in dealing with these difficult encounters. Staff now have far more confidence in their abilities.

CARLEEN DOUCET,
LAFAYETTE PARISH SCHOOL SYSTEM, LOUISIANA

Classroom Culture

Classroom Culture Training is for school leaders and education professionals interested in fostering a positive culture within each classroom. This training provides practical techniques to implement consistent and sustainable principles that prevent, or mitigate, the need for de-escalation interventions.



Program Details

The program is organized into three parts, consisting of:

Part One: Online course covering the “5 Principles of Classroom Culture”

- Participation in 3.5 hours of online training, with a follow-up discussion taking place during the virtual classroom day.

Part Two: One day in a virtual classroom

- Work through the training program and see firsthand the delivery methods you will use to train your colleagues.

Part Three: Classroom Culture Certified Instructor exam

- Upon completion, Certified Instructors will receive a two-year certification.

The 5 Principles of Classroom Culture

- 1 Calm and Consistent:** Take a deep dive into the effects of adult behavior on student behavior. Generate a list of consistent, calm responses to student behaviors that would normally trigger negative emotional responses.
- 2 Sustainable Routines:** Create rules and routines that you can begin using immediately. You and your students will better know what to expect and what is expected as you learn the difference between rules and routines, the roles of each in your classroom, and how to establish and teach them effectively.
- 3 First Attention to Best Conduct:** Learn how an adult’s behavior and expectations impact student behavior and develop methods to build and sustain a positive classroom culture. Gain effective strategies for praise to ensure your attention is first and foremost recognizing appropriate student conduct.
- 4 Scripted Interventions:** Establish what you are going to say when responding to common behaviors in the classroom. By understanding how your behavior affects that of your students, you create habits for yourself that allow you to respond consistently and calmly to challenging student behaviors.
- 5 Restorative Approaches:** Identify caring habits and learn how they can help you maintain a positive learning environment. These restorative approaches will continue to help you build positive relationships with your students, even when student behavior requires attention.



TRAINING PROGRAMS

Reframing Behavior™

Reframing Behavior is a schoolwide training program that unpacks the latest neuroscience research to help all K-12 educators build a more positive, supportive learning environment and prevent disruptive behavior.



Program Details

An annual schoolwide subscription includes:

- **Professional Development Day Curriculum:** Available for blended or all-classroom delivery
- **On-Demand Learning Library:** Full access to online modules and additional resources
- **Activities for Professional Learning Communities:** Prompts designed to reinforce learnings at staff meetings
- **Implementation Training and Ongoing Support:** Assistance with content setup and schoolwide rollout plan

The training program is built on four key elements:

- 1 Reframe Your Perspective:** Understand how neuroscience connects to learning, behavior, and mental health.
- 2 Reframe Your Awareness:** Practice emotional regulation through simple interactive experiences.
- 3 Reframe Your Actions:** Assume behavior is not solely a matter of choice.
- 4 Reframe Your Relationships:** Learn powerful relationship skills and apply them to common situations and behaviors.



Trauma-Informed De-escalation Training Solutions

Contact us for more information at [crisisprevention.com](https://www.crisisprevention.com) or call **800.558.8976**.

Account Executive

Phone

Email



FOLLOW US ON [f](#) [in](#) [X](#) [@](#) [p](#) [v](#)

10850 W. Park Place, Suite 250, Milwaukee, WI 53224 USA
800.558.8976 • info@crisisprevention.com • [crisisprevention.com](https://www.crisisprevention.com)